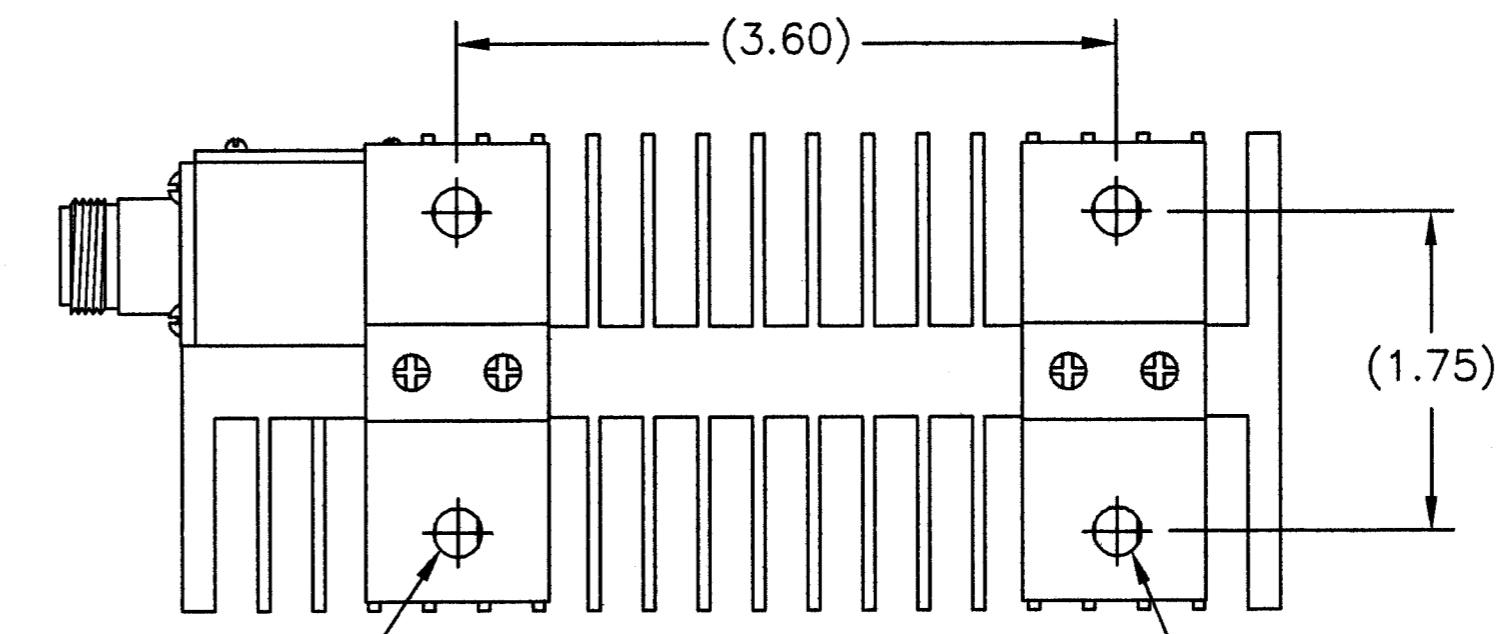
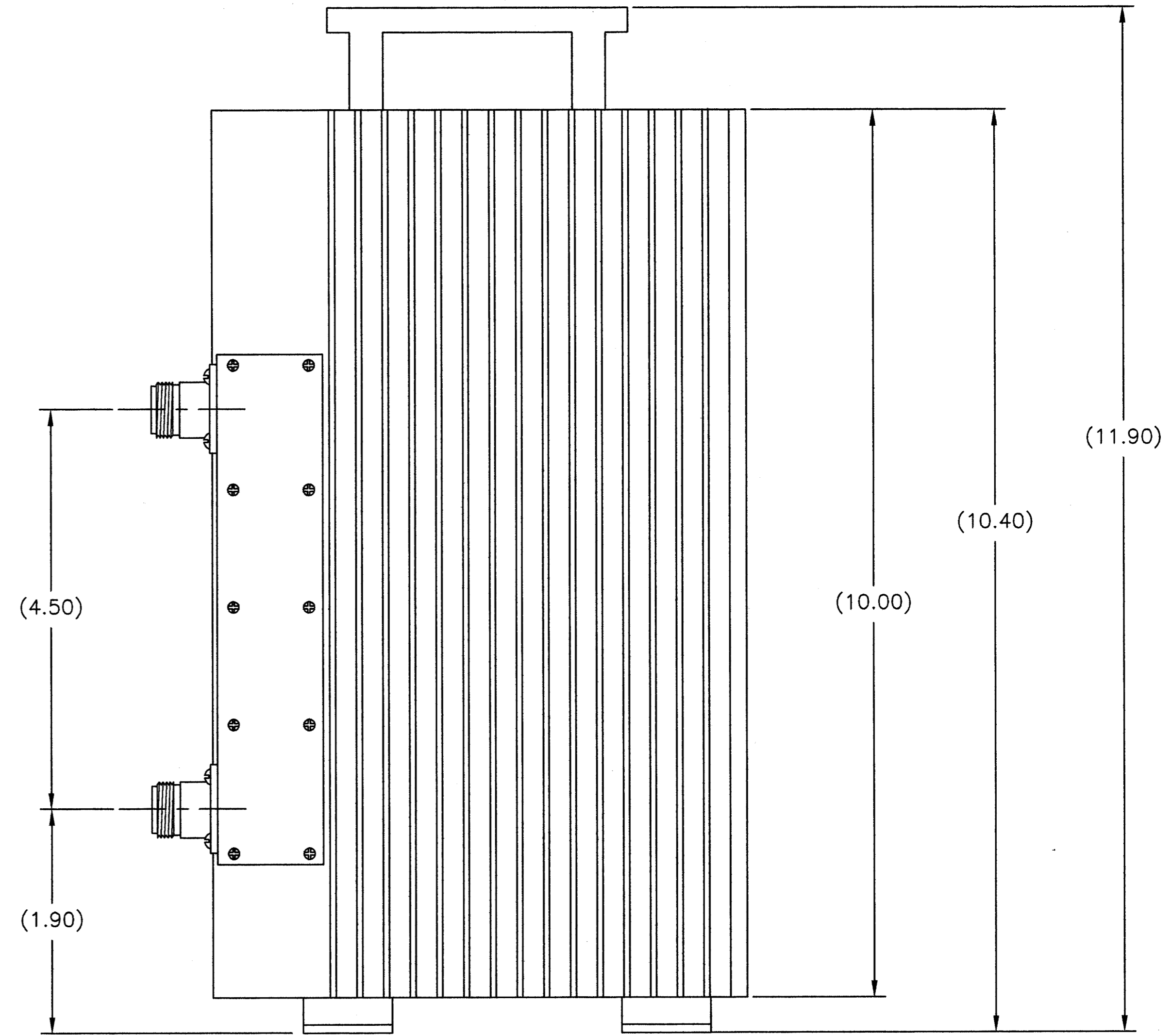
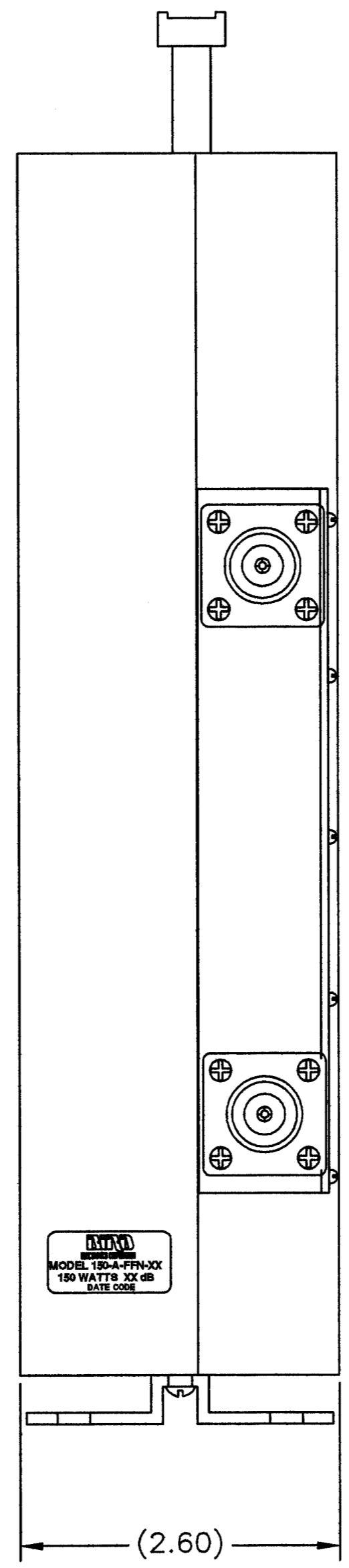
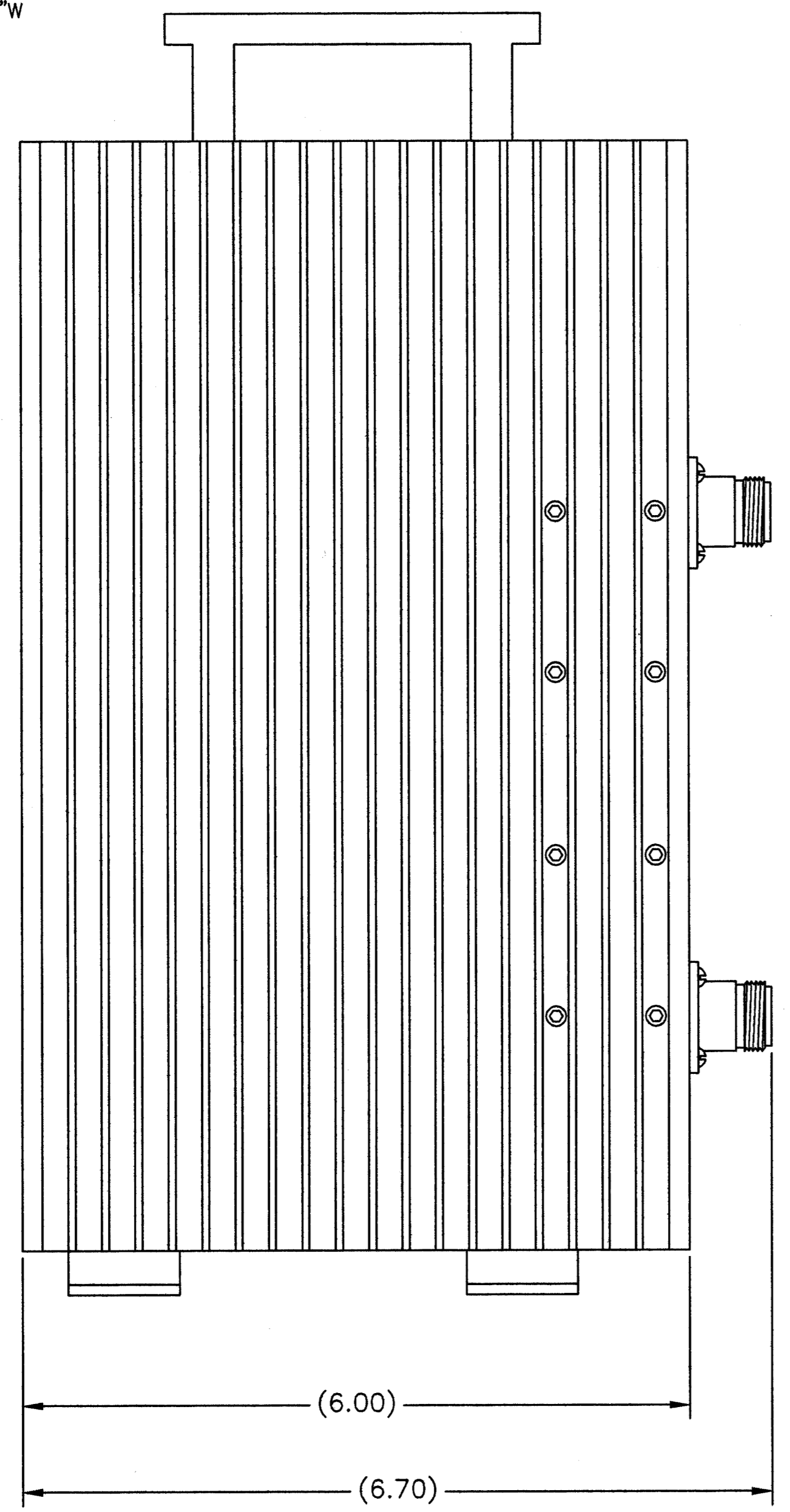


REVISIONS				
ZONE	REV	DESCRIPTION	DATE	APPROVED
A	ECN #0264		9-14-00	<i>MJEV</i>

SPECIFICATIONS:
 POWER RATING: 150 WATT MAX. @ 40°C. (BI-DIRECTIONAL)
 180 WATTS MAX. @ 25°C.
 FREQUENCY RANGE & VSWR:
 DC TO 1GHz AT 1.10:1 MAX.
 1GHz TO 2.4GHz AT 1.25:1 MAX.
 CONNECTORS: N-TYPE FEMALE, TRI-ALLOY PLATED
 DRY LOAD: CONVECTION COOLED
 NOMINAL SIZE: APPROX. 11.90"H X 6.70"L X 2.60"W
 WEIGHT: APPROX. 6.6 LBS.



OTHER MOUNTING PATTERNS AVAILABLE ON SPECIAL REQUEST
 4x 1/4" THRU HOLES

XX = DASH NUMBER (dB VALUE)

-30	30	±0.8 dB	±1.3 dB
-20	20	±0.5 dB	±1.0 dB
-10	10	±0.4 dB	±0.8 dB
-06	6	±0.4 dB	±0.6 dB
-03	3	±0.3 dB	±0.5 dB
-02	2	±0.3 dB	±0.5 dB
-01	1	±0.3 dB	±0.5 dB

DASH NO.	dB ATTN.	DC - 1GHz ATTENUATOR ACCURACY ±dB	1 - 2.4GHz ATTENUATOR ACCURACY ±dB
----------	----------	-----------------------------------	------------------------------------

DIMENSIONS HEREON ARE FOR CUSTOMER CONVENIENCE AND REFERENCE ONLY. TOLERANCE TO BE APPLIED ONLY WHERE INDIVIDUALLY STATED ON THE RESPECTIVE DIMENSION. -DO NOT SCALE DRAWING-

UNLESS OTHERWISE SPECIFIED DIMENSIONS ARE IN INCHES TOLERANCES ARE: FRACTIONS DECIMALS ANGLES ± 1/64 .005 ± 30° ± 0.010 ± 30° ± 0.005 ± 0.005	MILLIMETERS ±.4 ±.12	THIS DRAWING IS THE PROPERTY OF THE BIRD ELECTRONIC CORPORATION. THE DESIGNS AND SPECIFICATIONS DISCLOSED HEREON ARE PROPRIETARY AND SHALL NOT BE REPRODUCED, NOR COPIED, NOR USED AS THE BASIS FOR THE MANUFACTURE OR SALE OF APPARATUS OR DEVICES WITHOUT THEIR EXPRESS WRITTEN CONSENT.	
DO NOT SCALE DRAWING		APPROVALS DRAWN: D.M.RINK CHECKED: APPROVED: <i>MJEV</i>	DATE 2-19-03 2-27-03
MATERIAL:		TITLE TERMINATION, CONVECTION COOLED, 150W	DATE
FINISH:		SIZE D	DATE
		SCALE 1:1	DATE
		COM CODE AT1	DATE
		SHEET 1 OF 1	DATE

Dwg No. 150-A-FFN-XX